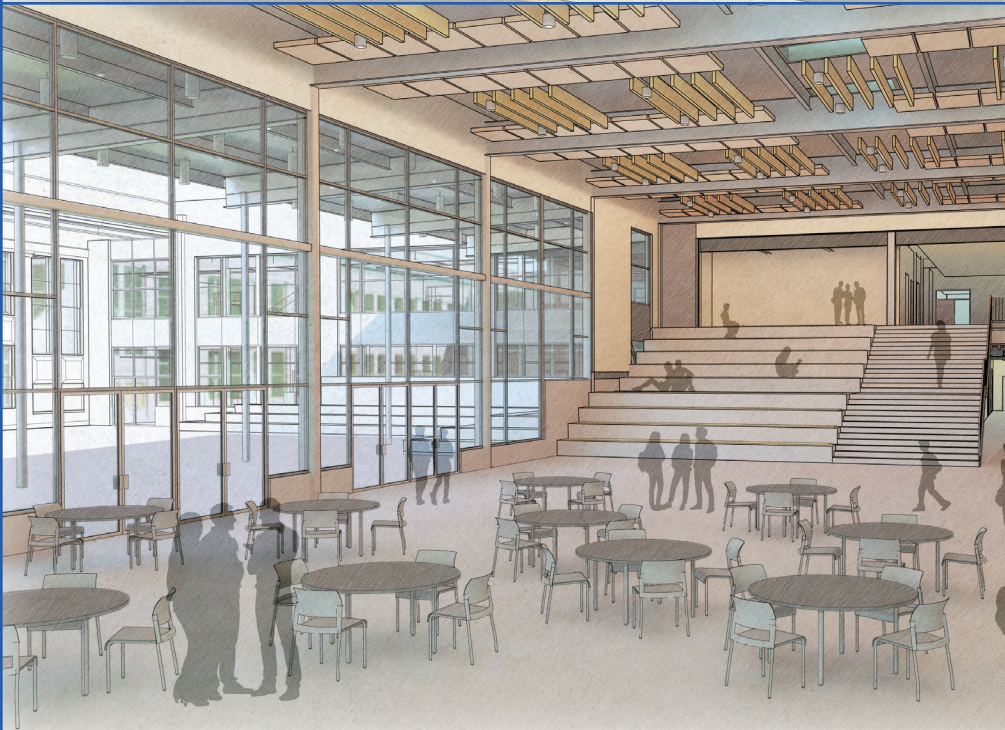




Benson Polytechnic High School

Modernization



Design Highlights

- Modernization of this designated Portland historic landmark
- Accessible, ramped front entry with gathering area
- Fully modernized historic auditorium with retained balcony, updated lighting, AV and acoustics
- Fully modernized historic gym with updated running track
- Student commons/cafeteria in 'heart' of school adjacent to enlarged student social courtyard
- CTE work courtyard
- Seismic retrofit of existing buildings and all health & safety upgrades
- Co-located core academic and CTE learning spaces in new, 2 story wings

Project Timeline

SPRING 2019 - SPRING 2021

Design & Permitting

Schematic Design / Design Development / Construction Documents / Permitting

SUMMER 2021 - SUMMER 2024

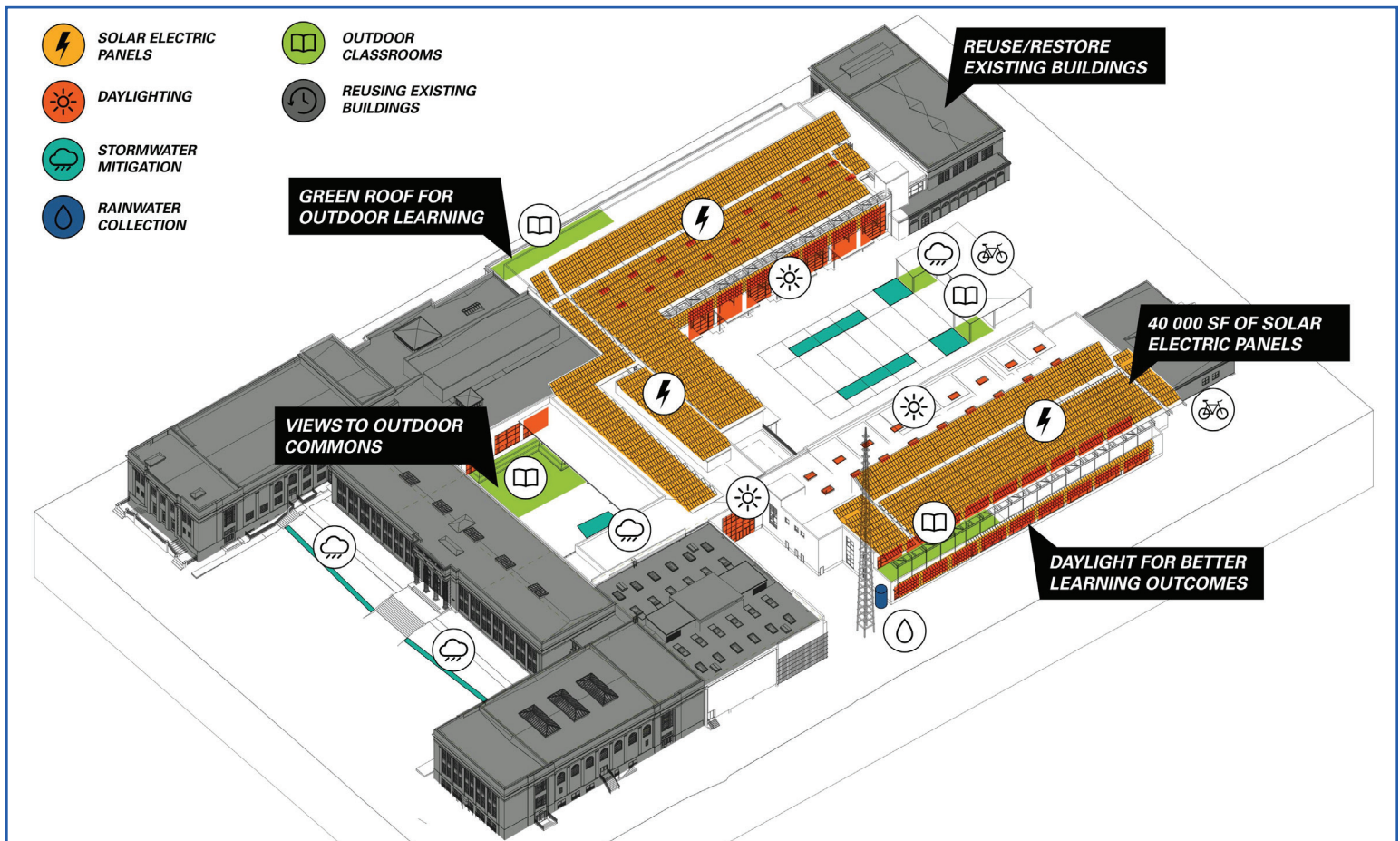
Construction

Students and staff will temporarily relocate during construction.

FALL 2024

Completion

Fully modernized Benson campus opens



Benson Modernization Details

Multiple Pathways to Graduation building added

In 2019 the PPS Board of Education voted to expand the Benson master plan to include a separate new school building to house Multiple Pathways to Graduation programs (MPG). The building will be located on the nearby Benson parking lot and include Teen Parent Childcare, Alliance High School, DART/Clinton School and Reconnection Center and Services. Additional classroom space within the Benson campus will accommodate Portland International Scholars Academy (PISA), Pioneer High School, Portland Evening and Portland Summer Scholars, and Portland Virtual Scholars.

BOE committed to funding Benson Modernization

PPS is committed to the modernization of Benson Polytechnic. To ensure this, the Board of Education expects to undertake a capital bond campaign in 2020 to support all phases of the ongoing Benson campus construction, together with other projects. If a bond is not referred or passed by voters in 2020, the Benson project, including the new MPG building, is expected to be completed by a Full Faith and Credit Bond.

Benson Tech/MPG programs will relocate during construction

In order to increase safety and project efficiency, all students and staff will be temporarily relocated during construction: Benson staff and students, including Pioneer High School programs, will relocate to the Marshall Campus on SE 92nd Ave. Alliance High School, Reconnection and DART/Clinton will relocate to the Kenton Campus. PISA, Evening & Summer Scholars will relocate to Grant High School.

Transportation to the Marshall Campus

PPS is currently studying transportation options that will help Benson students get to the Marshall campus during the three year construction period. The transportation plan could include a mix of public transportation and yellow school bus service.

BUILDING OUR FUTURE TOGETHER.

<http://BensonBond.pps.net> • Email: BHSMOD@pps.net • Phone: 503-916-2222
 f www.facebook.com/pps.homepage/ @PPSConnect

Portland Public Schools
 School Building Improvement Bond

